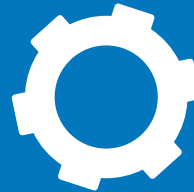




PALS Day 2024



Williamsburg Middle School
August 22, 2024



WMS Administration and Support Staff



Principal
Bryan Boykin



Assistant Principals
Yolanda Nashid - 6th
Dr. Nicole Johnson - 7th
Dr. Colleen Koval - 8th



Director Of Counseling
Elise Kenney-Caldwell



Instructional Technology
Coordinator
Christine
Stokes-Beverley



6th grade Counselor
Paul Gardner



Activities Coordinator
Ashley Hogwood

Additional Staff

Intervention Counselor:

Substance Abuse Counselor:

Social Worker:

School Psychologist:

School Nurse:

School Clinic Aide:

DEI Coordinator:

Natalie Battle

Kim Chisolm

Kate Karns

Amy Nemeth

Melissa Wong

Rahel Gebregiorgis

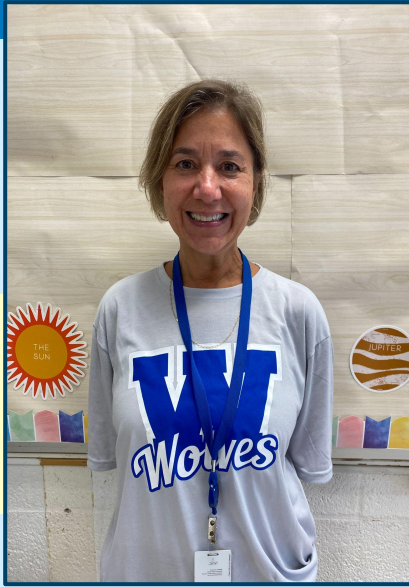
Carrie Wielechowski





Your TA
Teachers!

TEAM Grizzlies



Ms. Teixeira
Math



Ms. Winter
Social Studies



Mr. Sundwick
Science

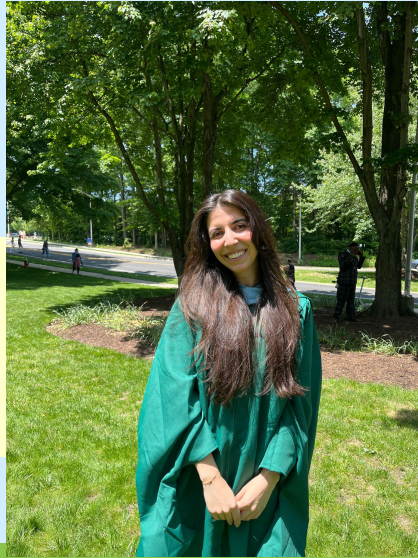


Ms. McFerran
Family and
Consumer Sciences

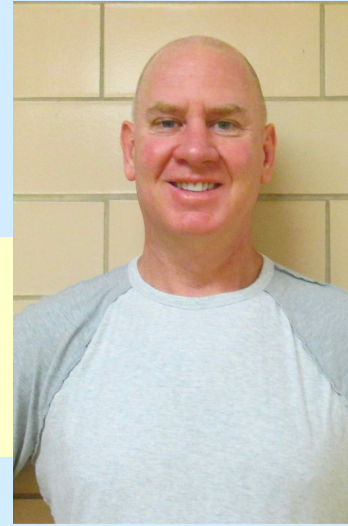
TEAM Grizzlies



Ms. Delenick
Reading



Ms. Dizayee
English



Mr. Clark
**Change from Mr. Witte
Health and PE



Ms. Taylor
Special
Education

TEAM Coyotes



Ms. Hodkin
Math



Ms. Velez
Social Studies



Ms. Post
English



Ms. Blandford
Science

TEAM Coyotes



Ms. Klanderman
Reading

Ms. Siefert
Special
Education

Mr. Edwards
Band

Ms. Young
HPE

6th Grade TEAM



Ms. Champion
Special Education



Mrs. Flynn
Special Education

3-STEP PARENT PROGRAM

01



02



03



A Day in the Life



Arrival/Dismissal
Daily Schedule
Wolf Time
Health and Safety

Arrival/Dismissal

Building Entrance/Arrival Time

- Please do not drop students off before 7:30 AM
- Doors #1 and 14 - upper entrance
 - car riders, walkers & bikers coming from upper Harrison
 - **Please do not pass cars in the drop off lanes for safety reasons**
- Door #4 - lower entrance, **NO CAR RIDERS!**
 - Bus riders and walker/bikers from lower Harrison
- Students will wait in the auditorium until dismissal at 7:40 am to go to TA

Dismissal

- Students are dismissed with the bell at 2:35 PM (will dismiss 5 minutes early the 1st week)
- Car riders will be picked up at upper loop
- Please - no cars in the bus lanes



LOCKERS

- Locker breaks are scheduled throughout the day
- Lockers are a shared environment: Students should keep lockers clean - lunch bags/snacks should go home nightly
- Students should take a photo of their locker #/combo information to save on their iPad (or record info in a safe place!)
- REMINDER: Cellphones and electronics will be stored in their lockers.



Wolf Time

Scheduled on A and B days from 11:44 am - 12:19 pm beginning October 21.

(Until then students go to TA when Wolf Time is scheduled)

- Students will either be placed in an intervention or attend an enrichment offering.
- **Intervention**
 - Beginning of Year data will be used to help decide if a student needs intervention.
 - Interventions will be provided in Reading, Writing, or Math.
 - Students who make progress and no longer need intervention will enter the enrichment cycle.
 - Groups are truly flexible.
- **Enrichment**
 - There are 7 rotations during the year. Each rotation is 15-16 school days.
 - Students will provide their top choices for enrichment at the beginning of the year. Every effort is made to have students in their top three choices at some point in the year, but not guaranteed.
 - Students may have a teacher for enrichment who is not a teacher on their schedule.

Lunch Routine

- Lunch begins at 11:08. Students should go directly to the cafeteria after putting their things away.
- **Students eat in the cafeteria.**
- Students go outside for 5-10 minutes after eating (weather permitting)
- When library is open, students are able to go to the library once they are done eating (limited passes)
- **Students are expected to clean up after themselves (table and floor) before being dismissed**



BREAKFAST

- Student Breakfast \$2.00
- Breakfast Entree \$1.55
- Juice \$0.75
- Milk \$0.80
- Fruit \$0.75
- Cereal \$1.00



LUNCH

- Elementary Student Lunch \$3.25
- Middle/High School Student Lunch \$3.50
- Adult Lunch \$4.50
- Lunch Entree \$2.75
- Side Veg \$0.75
- Side Fruit \$0.75
- Milk \$0.80

Students that do not qualify for free lunch will be expected to pay at the reduce or standard rates.



WELCOME TO THE CLINIC

Healthy Students Learn Better.

Please let the clinic know:

- ❖ If your child has a health condition, such as allergy or asthma that may need a health care plan or emergency medications kept in the clinic.
- ❖ If your child needs accommodations for an injury, surgery, concussion, or any other condition where they are unable to participate in PE.
 - For accommodations **3 days or longer**, a note from a physician is required.
- ❖ Students who are sick or sent home sick, must remain home until vomit/diarrhea/fever free for **24-hours**.
- ❖ If your child needs daily or as needed medications at school, please contact the clinic about the required forms.

Forms can be downloaded from the school health website:

<https://health.arlingtonva.us/public-health/school-health/>



Clinic Team



Public Health Nurse

Melissa Wong, RN

mwong@arlingtonva.us

703-228-5452

(Please schedule an appointment)

School Health Aide

Rahel Gebregiorgis

rgebregiorgis@arlingtonva.us

703-228-5454

Clinic Hours: 7:30am - 3:00pm

AOVP

- Please complete all of the information in the [Online Back to School Packet](#) prior to October 31.
 - This packet includes the student directory information, media participation opt out, and pta directory opt in.





SPECIAL EDUCATION SERVICES and 504

Student Support Coordinator

Jenna Gallo

703-228-5475

SPED Department Lead/6th Grade

Amy Flynn

- **Amy Flynn, Emily Seifert & Jennifer Taylor;**
Special Education Case Carriers
- **Yolanda Nashid,** Assistant Principal/LEA
- **Amy Nemeth,** School Psychologist
- **Kate Karns,** School Social Worker
- **Cheree David,** Speech Language
Pathologist
- **Dina Reed,** Occupational Therapist

We are...

TEAM _____

*(insert your child's
name above)*

And more...

The primary point of contact, the SPED CASE CARRIER...

Will:

Communicate with your child on a consistent and frequent basis to check-in and address questions or concerns.

Will:

Communicate with your child's teachers, counselor & related service providers (if appropriate) to provide and receive support and resources.

Will:

Communicate with you on a regular basis to share successes and concerns.

The primary point of contact, the 504 CASE CARRIER...

Is:

Your grade level
school counselor
Mr. Gardner

Will:

Communicate with your
child's teachers to ensure
understanding of
classroom and testing
accommodations.

Will:

Touch base with
your student
periodically to
check in on how
classes and school
are going

504 Administrator: Ms. Kenney-Caldwell

STUDENT ACTIVITIES

Ashley Hogwood
ashley.hogwood@apsva.us
Activities Coordinator



Parent Volunteers and Chaperones

If you are interested in volunteering or chaperoning a field trip, please fill out the forms in the link below and email Ms. Portillo-Garcia daisy.portillogarcia@apsva.us once your application is submitted.

[Volunteer Application](#)



WILLIAMSBURG AFTER SCHOOL SCHEDULE

- There are **two (2) After School Periods (ASP)** at Williamsburg Middle School.
- At dismissal, report directly to your after school activity or sport.
 - **ASP I: 2:40 - 3:30**
 - **ASP II: 3:30 - 4:05**
- **Late buses leave promptly at 4:15 PM**



STUDENT ACTIVITIES

- Ultimate Frisbee
- Basketball
- Tennis
- Wrestling
- Soccer
- Cheerleading
- Swimming
- Track
- Intramurals
- Robotics Club
- Model UN
- Inked
- Math Counts
- TAB

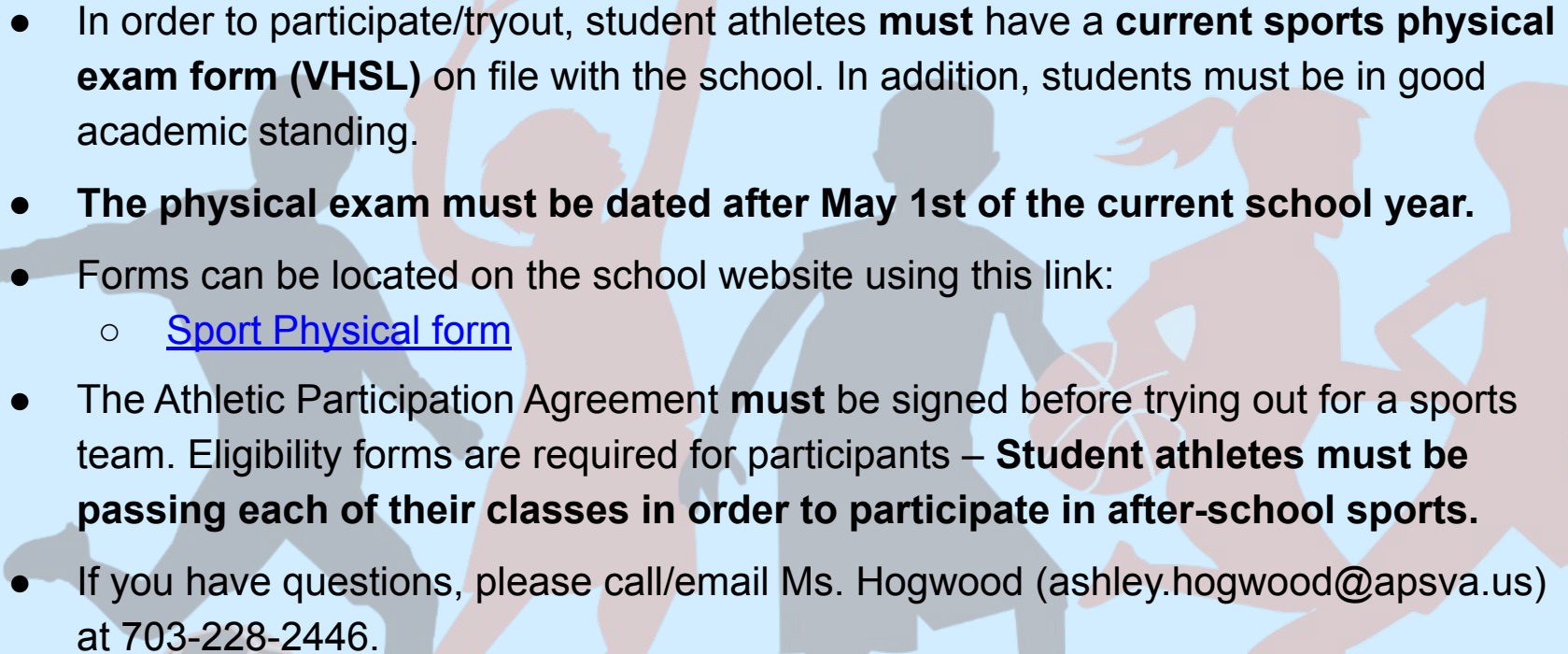
*Clubs vary by year

AND SPORTS

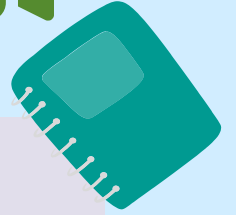
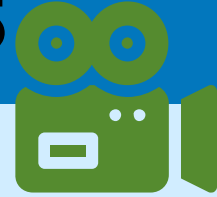
STUDENT
CLUBS AND
ACTIVITIES



Sports Participation Requirements (Physicals and other Forms)

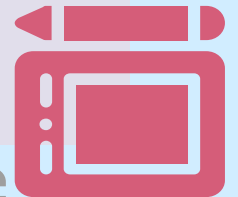
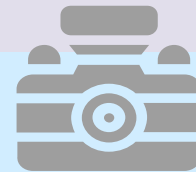
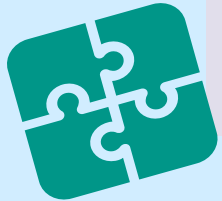
- In order to participate/tryout, student athletes **must** have a **current sports physical exam form (VHSL)** on file with the school. In addition, students must be in good academic standing.
 - **The physical exam must be dated after May 1st of the current school year.**
 - Forms can be located on the school website using this link:
 - [Sport Physical form](#)
 - The Athletic Participation Agreement **must** be signed before trying out for a sports team. Eligibility forms are required for participants – **Student athletes must be passing each of their classes in order to participate in after-school sports.**
 - If you have questions, please call/email Ms. Hogwood (ashley.hogwood@apsva.us) at 703-228-2446.
- 

24-25 ACTIVITY F AIR DATES



- * Monday, 9/23 6th grade ONLY (late buses will be provided)
- * Tuesday, 9/24 7th and 8th grade ONLY (late buses will be provided)
- * After-School activities will kick-off on Monday, September 30th (official first day of late buses)

*



Check-In



- The Extended Day Program (Check-In) is located in the Williamsburg Middle School cafeteria and **runs each school day from 2:35 PM to 6:00 PM**
- Students in the program must “check in” with staff and then are able to go to after school activities, work with a teacher or go to the Media Center during ASP I and II, after which they return to Check-In.
- **Kia Martin - Check-In Supervisor,**
kia.martin@apsva.us

Student Services



Director of Counseling
Elise Kenney-Caldwell
elise.kenney@apsva.us

Student Services Department

- **School Counselors** (counselor's role with students):
 - 6th: Paul Gardner
 - 7th: Gretchen Brenckle
 - 8th: Ashley Bleakley
 - Intervention Counselor: Natalie Battle
- **School Social Worker:** Kate Karns
- **School Psychologist:** Amy Nemeth
- **Substance Abuse Counselor:** Kim Chisolm
- **Diversity, Equity & Inclusion Coordinator:** Carrie Wielechowski



School Counseling in Middle School



Middle School Counselors:

- Provide support and lessons in Academic, Social/Emotional and Career/College Readiness
- Provide short-term counseling, skills development and interventions
- Run small group counseling
- Conduct classroom lessons through core classes and Health & PE classes
- Collaborate with parents and teachers to support all students
- Provide parent information session
- Serve as 504 Case Carriers

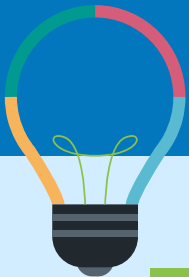
Differences from Elementary School Counseling:

- Will see more academic involvement with students:
 - Skill based counseling
 - Academic planning
- Classroom lessons will look different in which classes they are delivered and the frequency
- Small group counseling is a targeted intervention

How Students See Their Counselor

- **A parent or teacher may ask** for the grade level counselor to touch base with a student regarding a concern.
- **Students can see counselors by:**
 - Asking their teacher if they can come to the counseling suite
 - Messaging their grade level counselor on Canvas to set up a time
 - Asking their counselor questions when they see them in the hall or at lunch





GIFTED SERVICES

Collaboration/ Clustering/ Differentiation

WMS provides gifted services within the APS Talent Development Model through::

- collaboration with classroom teachers and the AAC to develop challenging curriculum,
- clustering identified students with their peers,
- and providing differentiated instruction within the classroom setting.

Identification Process and Referrals

The *identification process* begins with a referral. The referral process starts now and can be made until April 1.

- Once a referral is made, the eligibility process begins.
- Parents are notified once the eligibility process concludes.
- Identification in a prior school setting transfers to APS. This includes families that moved from APS and are now returning.

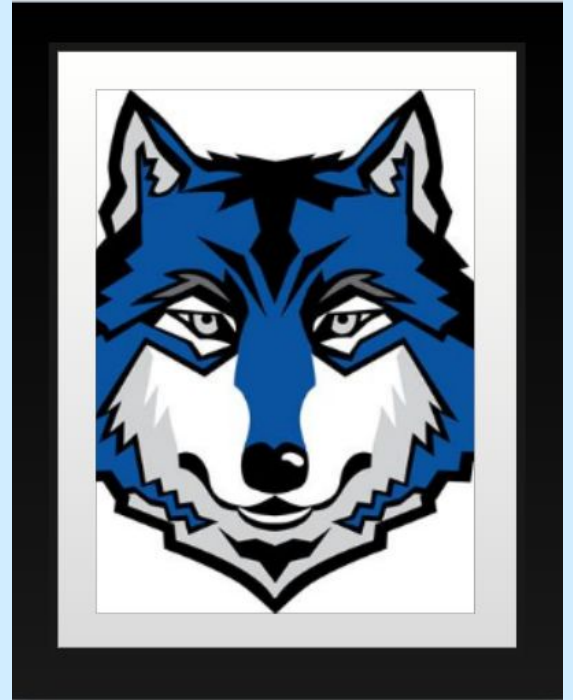
Stay Tuned...

- Parent Information Sessions coming this fall
- Information shared in the PTA Newsletter
- Monthly Newsletters
- Check out our [Website!](#)



Technology Resources and Information

Christine Stokes-Beverley
Instructional Technology Coordinator
Christine.Stokes@apsva.us



ParentVue

ParentVUE is the portal for parents and guardians to view student information such as:

- Classroom assignments and grades
- Attendance
- Transcripts
- Graduation status
- Emergency contact updates

How to Access:

Families receive an activation code upon student enrollment.

For more information: www.apsva.us/parentvue-canvas/



Canvas Learning Management System

Canvas is the Learning Management System used by teachers and students.

You can create a Canvas Observer Account to:

- View course content
- Monitor assignments (on a limited basis)

Creating an Observer Account is optional.



For more information: www.apsva.us/parentvue-canvas/

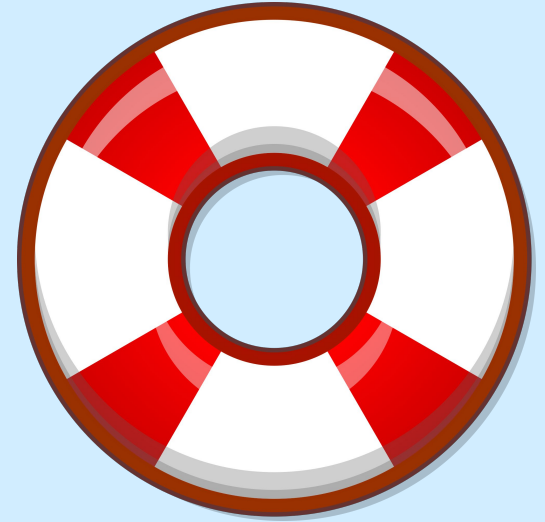
Family Technology Help

Access resources such as:

- iPad technology tutorials
- Canvas Parent Observer account assistance
- More tech support options

How to Access:

On the school website: Go to Technology > Family EdTech.



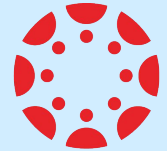
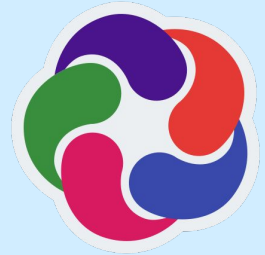
Student Technology Resources

Available Tools Include:

- School-issued iPad
- StudentVUE
- Google Workspace for Education
- Canvas Learning Management System

Getting Help:

- Visit the school website for resources.
- Submit help requests through their TA teacher during the day.



CANVAS
BY INSTRUCTURE

and more!

APS iPad Guidelines

- Content Filtering:
 - iPads are filtered for appropriate content.
 - Students access only APS-approved educational apps via the APS App Catalog (Self-Service).
- Restrictions:
 - No access to AirDrop, iMessage, or FaceTime.

Learn More:

Explore the Lightspeed content filter by scanning the QR code or via bit.ly/apslightspeedinfo



Understanding the Acceptable Use Policy

Key Points:

- Follow APS rules and school staff instructions.
- Adhere to copyright and fair-use laws.
- Only use the device issued to you.
- Follow your family's values and monitor device use at home.

Policy Access: The full Acceptable Use Policy is available on the Technology page of the school website, or scan the QR code.



iPad Deployment Information

What to Expect:

- Your student will bring home an iPad, keyboard case, and charger.
- Students will attend an Acceptable Use Policy (AUP) review session before password resets and distribution.

At-Home Tips:

- Consider reviewing the AUP with your student.
- Consider creating a plan for device use at home.



Please send your student to school with their elementary school iPad on Wednesday, August 28!

Contact Information

Christine Stokes-Beverley

Instructional Technology Coordinator

Christine.Stokes@apsva.us

703-228-5477

WMS PTA

President: Jill Gasper

Email: president@wmspta.org

GET INVOLVED!

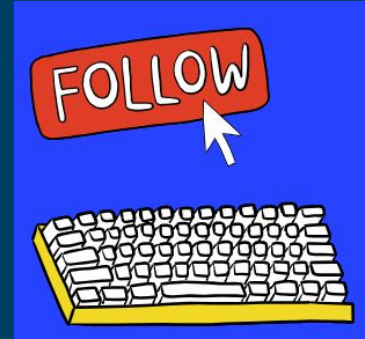


Williamsburg Middle School

PTA[®]

everychild.one voice.[®]

You can also stay connected to



website: wmspta.org

on:  Williamsburg Middle
School PTA

On:  [wmspta_wolves](https://twitter.com/wmspta_wolves)



WMS PTA



■ The WMS PTA publishes a directory each year.

- When you log into ParentVue at the beginning of the school year to make sure your family's information is current, you will have the option to participate in the directory.
- Even if you have been in the directory before, you will still need to complete this step. This adds you to the database. Once your ParentVue update is complete (Must be done by OCT 15), that database is sent to our vendor to begin building our directory.
- Please note that our directory software allows you to customize what's visible to others in the online and print versions.

■ Sign up for the PTA Newsletter!

- It's published weekly during the school year.
- We also send e-blasts as needed for events and reminders.
- To sign up, go to wmspta.org and click on "Get the PTA Newsletter" on the main landing page.

Purchasing PE Uniforms

THANKS FOR YOUR ONLINE ORDERS!

- **Unable to purchase a PE uniform?**

**See the PE teachers today in the GYM for a chance to outfit your son/daughter in some RETRO PE Uniforms!
Cash or check ONLY**

- **All goods will be delivered to the school and will be distributed by the PE department.**
- **All sales are final**



Shirts-\$11.00



Shorts-\$13.00



Running Shorts-\$18.00

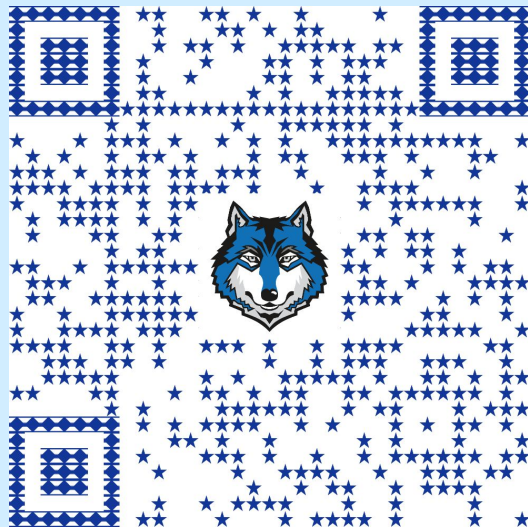


Bags-\$9

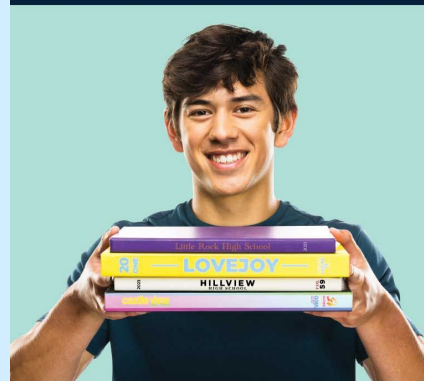
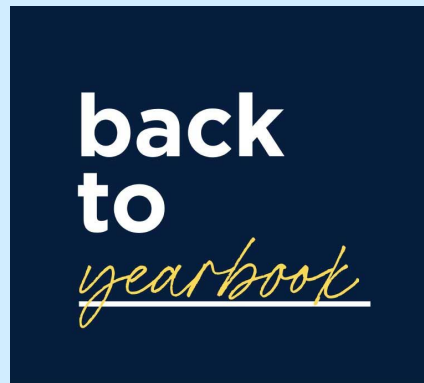
Purchasing the 2024-2025 Yearbook

Scan the QR code to order your yearbook online today!!

Feel free to contact **Andrea McFerran** andrea.mcferran@apsva.us with any questions.



Products	Price
Yearbook	\$47.00
Enhanced Personalization	\$7.00
Icons	\$0.00
* Signature Package	\$25.00
Autograph Section	\$7.00
Photo Pockets	\$7.00
Clear Protective Cover	\$7.00
Donate a Yearbook	\$47.00
Black & White Autograph Section	\$5.00



Starting at \$47.⁰⁰

THINGS TO REMEMBER!



CELL PHONES

- Turned off AND must be away in LOCKERS
- Smartwatches must be in DO NOT DISTURB/SCHOOL TIME mode or similar

*Smartwatches are removed during testing



iPads/other devices

- No iPads or other electronic devices in the cafeteria during lunch or during TA



Backpacks

- No backpacks in classrooms or cafeteria. Please leave them in your locker and grab only needed items during locker breaks



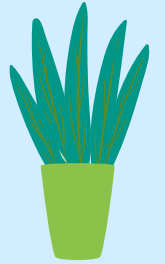
Water Bottles

- **CLEAR/Transparent** water bottles only

Communication is KEY



- Please monitor the school website for information
- Utilize ParentVue/StudentVue and Canvas to check assignments and grades
- If you have a concern about a class please contact the teacher **FIRST**, then counselor, or assistant principal.
- Please allow 2 work days for responses





What's Next?



Q & A

After:

- **Meet your child in the cafeteria to enjoy refreshments and join the PTA**

14

WILLIAMSBURG
Middle School
3600

**THANK YOU FOR
COMING TODAY!**