



**Arlington
Public
Schools**

Instruction





Updates to Grading Practices

Updated policy implementation procedures included the four following main changes to grading practices at the secondary level:

- Revised grade calculation procedures to minimize the impact of formative assessments
- Revised late work penalty procedures
- Addition of a retake/revision opportunity for all students
- Updated grade descriptors for A-E

Select the following links for more information on [Equitable Grading Practices](#) and [Secondary Grading Policy and Implementation Updates](#)





Updates to Interim Progress Reports

The policy implementation procedures indicate that interim

- progress reports (IPRs) will no longer be generated by teachers at the midpoint of each quarter.

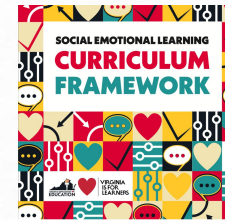
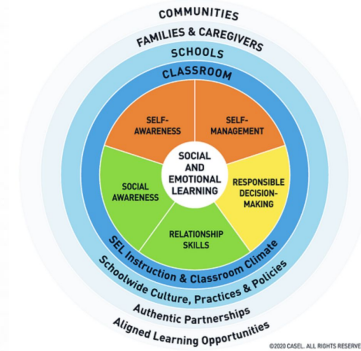
- Weekly automated message with grade summaries will be sent to parents/guardians starting in early September.
- This message will remind parents/guardians that detailed information on student progress can be found in ParentVue .





Social Emotional Learning

- Focus on Tier 1 instruction: **30 minutes twice weekly** focused on explicit SEL instruction
 - Schools will be utilizing Responsive Classroom, Second Step, or RULER as their SEL curricular resource
- Aligned to 5 SEL competencies and curriculum frameworks outlined by VDOE
- APS has set three **SEL priorities**:
 - Provide ongoing learning for all staff in SEL competencies and curricular resources
 - Provide students ongoing opportunities to learn and practice SEL
 - Prioritize regular, individualized outreach to students, families, and staff to continuously improve our support systems
- [SEL 3 Signature Practices](#)
- SEL Survey (grades 3-12) in the fall and spring





PAPER for Grades 6-8



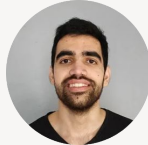
What is Paper?

- Educational Support System provided by school district
- FREE for all students 6-12
- 24/7 unlimited live chat tutoring
- Unlimited review of written work
- Educational and entertaining after-school video content
- Available in English, Spanish, French, Mandarin





Paper Tutors



- Real human tutors **support your students**
- Paper tutors guide students through the learning process rather than giving away answers.
- Encourage students to become self-advocates and reach out for help whenever they need it.



How can Paper support your students?

Building advanced skills and encouraging self-advocacy

- Individualized homework help
- Communication skills
- Problem solving
- Multi-step word problems
- Strengthen writing skills
- Reading comprehension
- Study skills and test-taking practice
- Digital citizenship
- Normalizes asking for help





Learn more about the Paper platform & tutors

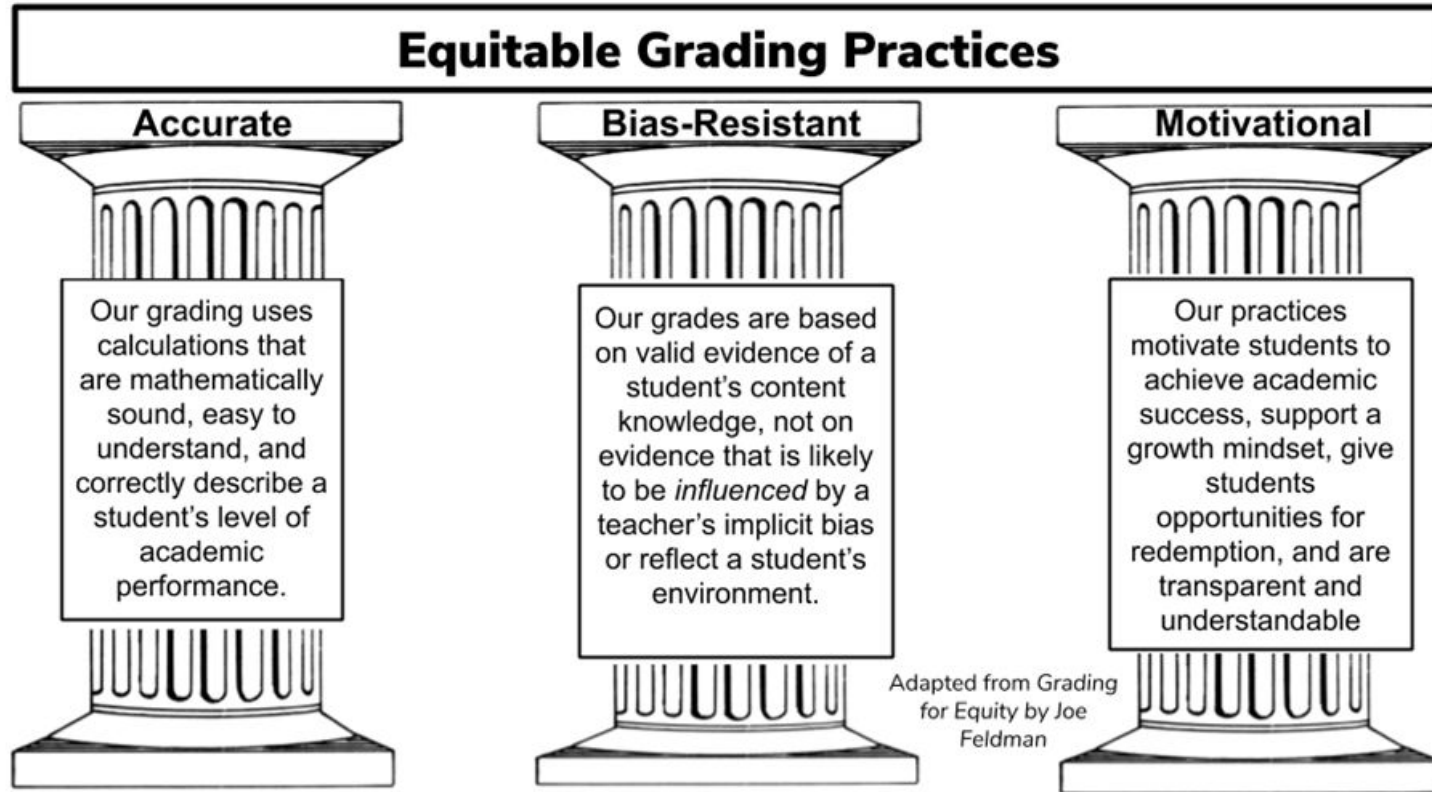
Explore your student's dashboard & sign up for a free webinar

Get started by building Paper into your homework routine





Equitable Grading Practices





Secondary Grading Policy & Implementation Updates

- The Arlington Public School Board adopted revisions to School Board Policy I-7.2.3.34 in June 2022
 - Policy I-7.2.3.34 Reporting Student Progress and Grades
- Superintendent Durán adopted Policy Implementation Procedures for Policy I-7.2.3.34 in June 2023
 - Policy Implementation Procedures I-7.2.3.34 PIP-2 Reporting Student Progress and Grades (Secondary)





Wolf Time

Meets on A/B Days beginning on October 23, 2023. Until then, students will go to their TA classes when Wolf Time is scheduled.

Students are placed in an intervention or enrichment, depending on BOY data.

Intervention

Reading, Writing, or Math. Students who make progress and no longer need intervention will enter the enrichment cycle. The groups are truly fluid!



Enrichment

Enrichment cycles will be approximately 15 school days and students will rotate approximately 6-7 times during the year. Students will be assigned to an enrichment.

Flex

Teacher initiated-students are able to make up tests, get additional help, etc. Not for homework completion



Student Absences

If your student
is absent from
school...



Canvas

Check Canvas for
assignments and
announcements for the
day(s) missed



Students to Teacher

Encourage your student
to contact the teacher
for additional support
or clarification of
missed work



Parents to Teacher

Email individual
teachers for additional
clarification if needed



ParentVue Access

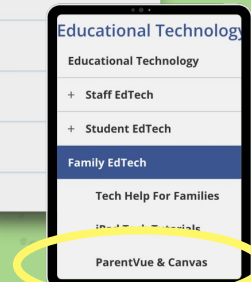
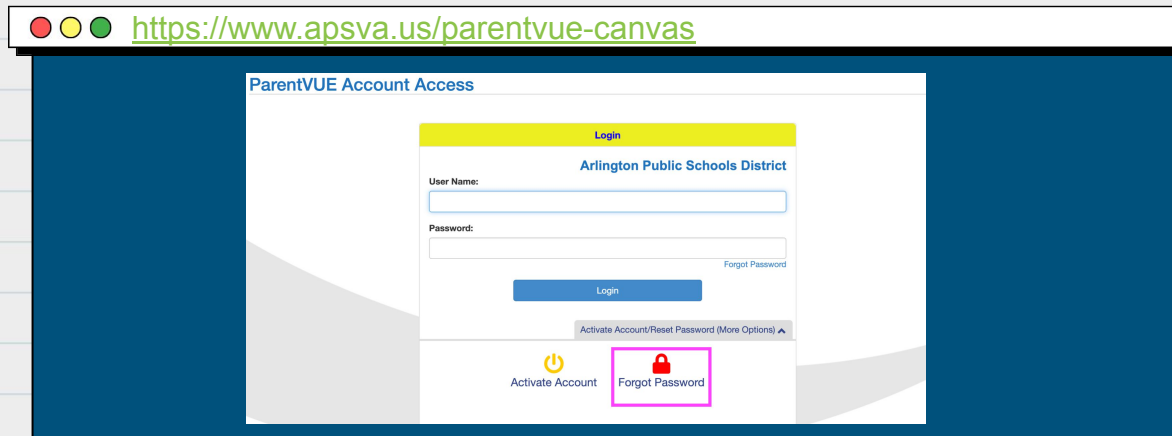
To access ParentVue, go to the WMS homepage. Under “Quicklinks” select ParentVue.

The screenshot shows a web browser window with the address bar containing <https://williamsburg.apsva.us/>. The page content includes a navigation menu with links for STUDENTS, FAMILIES, and STAFF. Below this is a 'Quicklinks' section with a list of links: 'Go to Classroom Help Desk?', 'Request an Interpreter (Families)', 'Engage with APS', 'A Day, 8 Day and Anchor Day Schedule', 'Student Handbook', 'Attendance 793 228 5444', 'Morning Announcements Blog', 'School Morning Announcement', 'Yearbook', 'Important Phone Numbers', 'Registration', and 'ParentVue'. The 'ParentVue' link is circled in yellow. A large yellow arrow points from the top right of the page towards the 'ParentVue' link. The main content area features a 'WELCOME TO WMS' banner, a 'Meet Our New Assistant Principal' button, and several news items including 'After School Activities Fair', 'EARLY FALL SPORTS', and 'PALS Day Presentation'.



ParentVue Access

- Contact the school if you need an activation code.
- If you have any problems with logging into ParentVue or forgot your password, please visit: <https://www.apsva.us/family-access-center/> for parent help resources.





ParentVue View

Make sure you are in the correct grading period.

Class	Teacher	Room	Grade
1: Grade 6 Reading	Sherilyn Wall	Room 201	N/A
2: History to Present	Christopher Seeger	Room 202	N/A
3: Science 6	Lisa Blandford	Room 231	N/A
4: Math 6	Susan Hodkin	Room 205	N/A

Click on individual classes for more details.

Class	Grade	Percentage
Grade 6 Reading	N/A	0.0%

Remember, these grades represent a moment in time and can change frequently!



Tech Help for Families

- From the WMS Webpage > Technology > Family EdTech
 - Tech Help
 - iPad Resources
 - Canvas & ParentVue

<https://williamsburg.apsva.us/edtech/family-edtech>

Technology Help Resources for Families

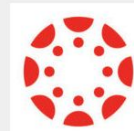


[Digital Learning Devices](#)



[ParentVue Help](#)

[Overview of ParentVue](#)



[Canvas Parent Observer FAQs](#)



[iPad Tech Help](#)

Educational Technology

Educational Technology

+ Staff EdTech

+ Student EdTech

Family EdTech

Tech Help For Families

iPad Tech Tutorial

ParentVue & Canvas



Helpful Hints for 2023-2024

iPad Charging



Identify an **iPad Charging Location** to charge the iPad each night. Hint: It's helpful to put their backpack next to the location after completing homework each night.

iPad Password



Know your child's **iPad password**. If they forget it, they need to tell their TA teacher a request can be placed to reset it.



Helpful Hints for 2023-2024



Homework Routines

Establish some **homework routines**:
A set location,
time, access to
supplies, etc.



ParentVue

Periodically check with your student & **ParentVue**. We recommend at least once a week. Teachers typically update once or twice a week.

New this year: Families will receive weekly email updates for each class a student is enrolled in.



Helpful Hints for 2023-2024



Retake Policy

Be sure your child understands the **retake policy** for assessments.



Self-Advocate

Encourage and support your child to **self-advocate!** This is such an important skill to learn, develop, and grow.



Here to Help

We are here to help!
We're on the same team,
and we all want what's
best for your student!



Contact Info

Email is the best way to contact teachers



WMS Website

<https://williamsburg.apsva.us>





Wolf Donut Contest

The TA from each grade with the most paid activity fees by September 30th wins doughnuts from the PTA!

